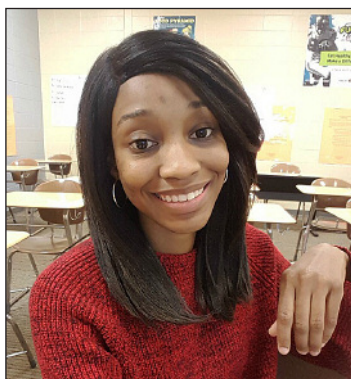




CONGRATULATIONS TO CHRISTEN JACKSON, CHES®, NCHEC's 2017 VIDEO CONTEST WINNER!

What do the words creativity, enthusiasm, and passion for health education bring to mind? NCHEC's 2017 Video Contest winner Christen Jackson's stellar submission had it all. Christen entered the NCHEC Marketing Committee's first video competition for CHES® and MCHES® who wished to try out their creative sides in a new media format, all while promoting the value of certification. Entrants were asked to film themselves speaking about the benefits of certification in their professional and personal lives, their roles as health education specialists, and the positive experiences they had gained as a result of NCHEC certification.



Christen Jackson, CHES®

Entries were judged by the NCHEC Marketing Committee based on creativity, compelling messaging, and demonstration of the value of CHES® or MCHES® certification. The decision was a unanimous one right out of the gate: Christen Jackson captured the essence of hope, determination, and dedication to her craft in her uniquely inspiring video production.

You can view Christen's winning video as well as the runner up videos on NCHEC's YouTube Channel ([www.youtube.com, search NCHEC](http://www.youtube.com/search/NCHEC)).

Christen is a Certified Health Education Specialist who is passionate about assisting people to understand and implement the basics of Health and Wellness Education with hopes of reducing current and future health disparities through four guiding principles: Educate, Elevate, Empower, and Encourage. She became CHES®-certified in 2014 and has been working

throughout the Public Health scene since her 2014 graduation from Georgia Southern University. Serving as a volunteer with City Year Inc. in South Carolina opened doors to other opportunities! Christen has taught older adults within the SNAP Program through the University of Georgia Extension Office and has worked within Emory Healthcare in Atlanta as a Rehabilitation Technician. She currently works with the Department of Public Health in Macon, GA on a grant funded study teaching the FLASH Sexual Health curriculum to high schools in the Middle

Georgia area. When the grant year is over, Christen has hopes to pursue her MPH in Health Behavior and relocate back to Atlanta, GA to gain more work-ready knowledge in the realms of Worksite Wellness, School Health and Health Coaching. When not working in the field, Christen loves to relax by thrifting unique clothing items and binge watching cooking shows.

Honorable Mention awarded to: Anita Sego, PhD, MCHES® and her student group from the University of Central Arkansas, where Anita is an assistant professor in the Department of Health Sciences.

Honorable Mention awarded to: Michael Hodges, MHS, CHES®, Bloomfield Health and Human Services. Michael is an Accreditation Coordinator who led the process to establish Bloomfield as New Jersey's first nationally accredited health department through the Public Health Accreditation Board (PHAB).

Twelve CHES® and MCHES® submitted excellent videos in this recent competition. NCHEC highly values each submission and sends a warm thank you to all contest participants. We hope many more of you will participate in this event in 2018!

inside this issue



2-3 Leadership News

2 Conference Schedule

4-5 Computer Based Testing

6 MCHES® Spotlight
Employer Spotlight

7 NCHEC Ambassadors

8 NEW CHES® 2017

9 NCHEC Boards 2018



Health Education and Promotion Online Program Directory – coming soon!

NCHEC Board of Commissioners Chair Report, written by Kerry Redican, MPH, PhD, CHES®

For many years we were fortunate to have access to two Health Education higher education program directories. One directory was produced by the American Association for Health Education (AAHE) and the other was by ETA Sigma Gamma. In the AAHE directory, Health Education programs were organized by state, and included colleges/universities, departments, degrees and concentrations, and contact person(s). The Eta Sigma Gamma directory was also cataloged by state and included the name of the educational unit's Eta Sigma Gamma chapter, programs, degrees, faculty list, and each faculty member's respective area(s) of expertise. As a higher education faculty member, I found both directories very useful in advising students, in promoting the profession, and for contacting colleagues.



will be helpful to prospective students, practicing Health Education Specialists and employers. To that end, the BOC recently voted to approve funding for the development of a new, online directory of higher education Health Education programs.

Specifics regarding the content that will populate the site are in development. At a minimum, the directory will include the university/college, department, majors, degrees offered, accreditations (CEPH, CAEP), and department/chair/contact personnel. After the website is developed, institutions of higher education will be contacted to enter their program information. The process should move fairly quickly and the directory should be live by the summer of 2018. In addition, as it is a web-based system, the directory can be edited at any point thereafter, and any program information changes can be made quickly.

AAHE exited AAHPERD a few years ago and Eta Sigma Gamma did not continue to publish the directory. As a result, it has been many years since we have had a Health Education and Program directory. The NCHEC Board of Commissioners (BOC) felt strongly that there should be at least one central source (directory) where information about Health Education professional preparation programs can be found. The directory

We will do everything we can to make the data entering process as easy and user-friendly as possible. The NCHEC BOC is confident that CHES®/MCHES® will value having an up-to-date directory of Health Education and Promotion programs. More information regarding the directory will be disseminated in the next few months.

Conference Schedule

Mark your calendars for opportunities to earn continuing education contact hours.
For more information on these conferences, visit the organizations' Web site.

Organization	Details	Dates	Location
Association for Community Health Improvement (ACHI)	www.healthychcommunities.org	March 14-16, 2018	Atlanta, Georgia
Society for Public Health Education (SOPHE)	www.sophe.org	April 4-6, 2018	Columbus, Ohio
American College Health Association (ACHA)	www.acha.org	May 29 - June 2, 2018	Washington, DC
National Association of County & City Health Officials (NACCHO)	www.naccho.org	July 10-13, 2018	New Orleans, Louisiana
American School Health Association (ASHA)	www.ashaweb.org	TBD	TBD
American Public Health Association (APHA)	www.apha.org	November 10-14, 2018	San Diego, California



NCHEC visits Washington, D.C. in November with The Society for Public Health Education (SOPHE) to advocate for health education at the Coalition for Health Funding Capitol Hill event.

NCHEC and SOPHE prepare for the next Practice Analysis of Health Education Specialists

Executive Director Report: written by Linda Lysoby, MS, MCHES®, CAE

The health education profession has a long history of scientifically validating the Competencies that have become the basis of the professional credential(s), professional preparation, and professional development. There have been four competency development/job analysis studies released in the United States since 1985. The projects included the Role Delineation Project (1985), the Competencies Update Project (CUP 2005), the Health Education Job Analysis (HEJA 2010) and the Health Education Specialist Practice Analysis (HESPA 2015). Changes over time include increases in the number of Competencies and Sub-competencies and the identification of advanced-level Competencies and Sub-competencies. The Seven Areas of Responsibility have remained essentially the same with minor changes in wording for clarification purposes.

NCHEC leadership has made a strong commitment to maintain credentialing standards by regularly re-validating the Responsibilities, Competencies and Sub-competencies that provide the basis for the Certified Health Education Specialist (CHES®) and Master Certified Health Education Specialist (MCHES®) examinations. In keeping with the five year interval for this process, plans for the next study are currently underway.

NCHEC will once again be partnering with the Society for Public Health Education (SOPHE) using a contracted vendor. The comprehensive study will be undertaken to identify changes in health education and promotion practice since the last major study and to inform professional preparation and continuing education initiatives.

It is anticipated that there will be a call for volunteers for the next practice analysis in early 2018, followed by survey preparation in the summer, and then data collection in fall of 2018.



Reports will be finalized in 2019 and the results, including a revised Competency-based Framework and a Study Companion Guide publication, will be released in 2020. Allowing time for dissemination, it is anticipated that the results of the new practice analysis study will be reflected in the CHES®/MCHES® examinations in 2021.

We strongly encourage our practicing Certified Health Education Specialists to participate in the new practice analysis. Please watch for updates on the upcoming study and opportunities to participate by visiting <https://www.nchech.org/health-educator-job-analysis-projects> in 2018.

Resources:

- Doyle, E. I., Caro, C. M., Lysoby, L., Auld, M. E., Smith, B., & Muenzen, P. (2012). The National Health Educator Job Analysis 2010: Process and outcomes. *Health Education & Behavior*, 39(3), 695-708.
- Gilmore, G. D., Olsen, L. K., Taub, A., & Connell, D. (2005). Overview of the national health educator competencies update project, 1998-2004. *Health EducBehav*32, 725-737.
- McKenzie, J. F., Dennis, D., Auld, M.E., Lysoby, L., Doyle, E., Muenzen, P.M., Caro, C.M., Kusorgbor-Narh, C.S. (2016). Health Education Specialist Practice Analysis 2015 (HESPA 2015): Process and Outcomes. *Health Ed & Behav* DOI: 10.1177/1090198116639258.
- National Task Force on the Preparation and Practice of Health Educators, Inc (1985). A Framework for the Development of Competency-Based Curricula for Entry-Level Health Educators



◀ NCHEC was recognized at the ICE Exchange 2017 in New Orleans this October as a Dennis Faulk Research & Development Ambassador. Linda Lysoby, NCHEC Executive Director (right) accepts the award.

▶ NCHEC visited Atlanta, Georgia this November to present 4 sessions and exhibit at the APHA Annual Meeting. Beth Chaney, NCHEC Marketing Committee Chair, and Dixie Dennis, Immediate Past Chair, NCHEC BOC, pose for a photo at the exhibit booth.



COMPUTER-BASED TESTING FOR NCHEC EXAMINATIONS



For nearly 30 years, NCHEC has been administering a paper-based exam to measure the competency of individual health education and promotion practitioners. Since then NCHEC has been partnering with 130 universities across the country to proctor the paper-based examination. The last paper-based exam will be offered in April 2018. Registration for the April exam will close on March 1, 2018.

Beginning with the October 2018 examination cycle, CHES® and MCHES® exam candidates will have a new and modernized testing experience. Registration for the first computer-based testing (CBT) opportunity will open on May 1, 2018. Some reasons for the shift to CBT are responses to exam exit surveys in favor of computer testing, the expansion of testing sites throughout the United States and internationally, and the need for increased test site security for the exam administration process. The change to CBT also will provide more frequent and convenient testing times.

“The support for the transition to CBT was overwhelming,” said NCHEC’s Board of Commissioner’s Chair, Kerry Redican. “We are very excited about the opportunity to enhance our candidates’ experience throughout the examination process.”

BENEFITS OF CBT

Say goodbye to Scan Tron forms and transferring answers to a booklet. The CBT format is very user-friendly. Prior to testing, candidates can sample an online tutorial to become familiar with the computer testing format. And if your schedule is as busy as ever, CBT will offer the CHES® and MCHES® examinations during a ten day window. The first testing window will cover two weekends and will open on Thursday October 11 to Saturday, October 20, 2018. NCHEC will utilize Prometric testing facilities for the CHES® and MCHES® exam administration. For a complete list of testing locations, please visit www.prometric.com/nchec. One can enter a zip code to find the nearest Prometric facility. Test sites are typically open 6 days a week and normal hours are 8am-5pm.



The current exam administration scheduled for April 28, 2018 is the last opportunity to take the CHES® or MCHES® exam in the paper-based format.

EXAM APPLICATION PROCESS

Interested exam applicants will continue to apply through the NCHEC website. All exam applications and transcripts will be reviewed by the NCHEC Exam Coordinator to determine eligibility. Incomplete applications will delay the processing time. To help expedite the exam process, NCHEC encourages applicants to upload or send in all needed documents with the exam application, such as university transcripts and advisor letters. The earlier applicants apply and send in these documents, the earlier approved candidates can schedule their desired testing date and time.

The content of the CHES® and MCHES® examinations will not change with the transition to computer-based testing.

The fee schedule will change slightly for both CHES® and MCHES® with the CBT exam administration. There will be three sign-up periods instead of four, with an opportunity for a \$50 early bird discount.

October 2018 CHES® Exam

Window: October 11 - 20, 2018	Non-student Fee	*Student Fee
Early Bird Registration Deadline: 5/1/18 thru 5/31/18	\$270	\$220
Regular Registration Deadline: 6/1/18 thru 7/31/18	\$320	\$270
Final (Late) Registration Deadline: 8/1/18 thru 8/31/18	\$370	\$320

October 2018 MCHES® Exam

Window: October 11 - 20, 2018	Non-CHES Fee	*Current CHES Fee
Early Bird Registration Deadline: 5/1/18 thru 5/31/18	\$335	\$285
Regular Registration Deadline: 6/1/18 thru 7/31/18	\$385	\$335
Final (Late) Registration Deadline: 8/1/18 thru 8/31/18	\$435	\$385

SCORING

The passing standards for both the CHES® and MCHES® examinations will remain the same. CHES® candidates will receive an unofficial Pass/Fail result immediately. An official score report and certificates will be processed and mailed 4-6 weeks after the exam window closes. Due to a smaller number of eligible MCHES® candidates, this exam is officially scored after all candidates have completed the exam in order to provide the most reliable scoring results as advised by an expert psychometrician in order to protect the validity and accuracy of the exam.

As this is a different method for NCHEC certification, communication is key. NCHEC plans to host Webinars in early 2018 outlining the changes to the administration of the CHES® and MCHES® examinations. Please visit the NCHEC Website at www.nchech.org/CBT for frequently asked questions. Should you have additional information, please contact Melissa Opp at mopp@nchech.org.

Important Dates

Registration for last PBT exam:
closes on **March 1, 2018**

Last PBT exam:
April 28, 2018

Registration for 1st CBT exam:
opens **May 1, 2018**

Registration for 1st CBT exam:
closes **August 31, 2018**

First CBT exam dates:
October 11-20, 2018

MCHES® Spotlight

Jeff Yancey, PhD, MCHES®, is the manager of the Cancer Learning Center at Huntsman Cancer Institute (HCI) at the University of Utah. In his current job role, Jeff works to provide cancer information to patients, caregivers, members of the general public and students across the intermountain west and the world. He has developed a process for reviewing all institutionally developed patient education materials for alignment with health literacy principles.



NCHEC: Why did you originally decide to obtain the CHES® certification? And subsequently the MCHES®?

Jeff: I decided to obtain my CHES® when I first started working in the clinical environment as I was surrounded by MDs, RNs, PTs, MSWs and others who didn't understand my specialized training and skills. When I moved into a more administrative role, I felt that the master's level certification better represented my efforts in the health care system so I decided to sit for the MCHES® exam.

NCHEC: How does certification assist you in your position?

Jeff: Certification demonstrates that what I do requires specialized training and competency. When patients come looking for information, they may not know what MCHES® stands for, but they see, like others on their health care team, I have the training to do what I do. That means that the information they are getting from me is trustworthy and something they can use to inform and empower their decision making.

NCHEC: Do you have any advice for younger professionals beginning careers in the field of health education and promotion?

Jeff: I think having an open mind is critical to this profession as it is incredibly dynamic and multidisciplinary. This open-mindedness is inclusive of people, mentors, data, methodology, technology, opportunity and passions. Most of the best relationships and opportunities come from assuming the next adventure is with the next person I meet or the next article I read.

"MCHES® certification demonstrates that what I do for my patients requires specialized training and competency."

Jeff was recently honored with the Rising Star Award at the Cancer Patient Education Network (CPEN) International Conference in Cleveland, Ohio. He currently resides in Salt Lake City, Utah, and enjoys exploring the nearby mountains, as well as cheering for the University of Utah sports teams. (Go Utes!)

EMPLOYER Spotlight

An interview with **Angela Lee Nieves, MSH, MCHES®**, Coach Program Manager, Health Designs



NCHEC: What is your company's background in the industry?

Angela: Health Designs is a leader in worksite wellness with a focus on improving employee well-being, productivity and culture. We specialize in health coaching, wellness assessments, biometric screenings, consulting, custom programs and data management. Since 1995, we have worked to find meaningful and effective ways to tap into what motivates each person and what drives each organization, while understanding the importance of tailored solutions supporting confidence, growth, and engagement.



NCHEC: Why are the CHES® and MCHES® certifications important to you?

Angela: A key differentiator for Health Designs is the quality of our team. We seek professionals who are not only passionate about health and wellness, and live that passion themselves, but also are educated in a health science, such as health education, nutrition, exercise science, and nursing. Many of our team members have master's degrees and additional certifications, with health coaching and CHES®/MCHES® certifications being of most value to our team.

NCHEC: What job roles do CHES® and MCHES® fill in your organization?

Angela: Our CHES®/MCHES® certified team members are in several key roles at Health Designs – from Onsite Health Coach to Wellness Manager and Coach Program Manager. I handle the training of team members and managing Health Designs University, which includes working face-to-face with clients for onsite health coaching, delivering workshops, participating in business development presentations, and packaging meaningful reporting for clients. I currently serve as the Coach Program Manager for our organization.

NCHEC: Are there employee incentives in place involving obtaining and maintaining certification?

Angela: Health Designs attracts and retains highly educated health professionals who are intrinsically motivated to seek opportunities for certification and/or professional development. The company places a high value on learning and has also provided financial support for team members that obtain/maintain certifications including, but not limited to, CHES®/MCHES®.

Health Designs has been recognized as one of the top women-led businesses in Florida, and has received a Healthiest Company Award in 2017 from the First Coast Worksite Wellness Council (FCWWC) for organizations which make noteworthy strides to improve the health and well-being of their employees. It also was recognized by the Edward Lowe Foundation as a "Florida Company to Watch."

NCHEC Ambassadors 2016-2017:

Thank you for your Service

In 2016, the Division Board for Professional Preparation and Practice (DBPPP) launched the NCHEC Ambassador program to facilitate communication between university health education programs and the NCHEC organization. During the 2016-2017 academic year, the participating Ambassadors worked to promote the value of certification as a CHES® or MCHES®, and the importance of credentialing to the profession. These Ambassadors have played a vital role in supplying students in their departments with information about the discipline-specific certification that can help to differentiate them as candidates in the job market upon graduation.



NCHEC Ambassador Dr. Mindy Menn, University of Central Arkansas, displays CHES® and MCHES® information in her hallway.

Ambassador eligibility is based on a number of factors including possessing an active CHES®/MCHES® credential and representing a campus with an expanding number of exam applicants. All Ambassadors receive toolkits including promos and presentation materials to assist with messaging. Ambassadors are eligible to receive (1) continuing education credit per year of participation.

NCHEC wishes to extend a warm thank you to the following NCHEC Ambassadors for participating in the 2016-2017 academic year:

Ada Santaferria Martinez	SUNY
Alan D. Rowan	Florida State University
Alyssa Lederer	Tulane University
Amanda Lynch	University of Cincinnati
Amar Kanekar	University of Arkansas at Little Rock
Amy Sidwell	Fairmont State University
Angela Bailey	Bridgewater State University
Anna Nelson	Loma Linda University
Antonio J. Gardner	Mississippi State University
Ashley Monson	Wisconsin Public Health Association
Barry Brock	Barry University

Bethany Kies
Bojana Beric-Stojic
Brittney Bratcher
Caile E. Spear
Carla Janae Brown
Carolyn Rodgers
Carrie Rosario
Chandrika Johnson
Chantal Matthews
Charity Bishop
Chinwe O. Okeke
Chris Eisenbarth
Chris Hirschler
Christine Cortalano
Craig Demmer
Crystal Moseley
D. Randy Black
Danna Ethan
Darleen Peterson
Darson Rhodes
Deborah Fortune
Debra L. Fetherman
Deneen Long-White
Eileen McDonald
Emily R Bes
Emily Wilson

GinaMarie Piane
Glendola Mills
Helen Hopp Marshak
Holly T. Moses
Irene Pintado
J. Sunshine Cowan
Janea L Snyder
Janice L. Clark
Jennifer L. Tripken
Jill Lassiter
Joanne Sommers
Kate Hendricks Thomas
Kathleen Allison
Katy Maxemow
Keely Rees
Kelly Parsley
Kerry John Redican
Kiameesha Evans
Kim Kato
Kimberly Price
Kirsten Rodgers
Larry Olsen
Leigh Elizabeth Szucs
Leslie Crocker

Colorado State University
Long Island University
Texas Southern University
Boise State University
Arizona State University
Governors State University
University of North Carolina – Chapel Hill
Fayetteville State University
Old Dominion University
Indiana University
Concordia College
Weber State University
Monmouth University
Icahn School of Medicine
Lehman College
Lincoln University
Purdue University
Lehman College
Claremont Graduate University
The College at Brockport
North Carolina Central University
The University of Scranton
Salisbury University
Johns Hopkins Bloomberg SPH
The University of Southern Mississippi
Massachusetts College of Pharmacy
and Health Sciences
National University
Morgan State University
Loma Linda University
University of Florida
Mississippi University for Women
University of Central Oklahoma
University of Arkansas
Truman State University
Marymount University
Bridgewater College
Bowling Green State University
Charleston Southern University
Lock Haven University
Indian River State College
University of Wisconsin
Carroll College
Virginia Tech
Monmouth University
Walden University
Lenoir-Rhyne University
Georgia College and State University
A.T. Still University
Texas A&M University
Virginia State University

continued on next page

Ambassadors *continued from page 7*

Lisa Beck	Ball State University
Manuella B. Crawley	Cleveland State University
Marcilyn Colón Colón	UPR Medical Sciences Campus
Mardie Burckes-Miller	Plymouth State University
Marsha McNeal	Louisiana State University
Megha Madan	Emory University
Melissa Book McAlexander	Notre Dame de Namur University
Melva Thompson-Robinson	University of Nevada
Michael VanGossen	McNeese State University
Michelle L. Cathorall	Southern Illinois University
Micki Hrcir	Arizona State University
Mindy Menn	Texas Woman's University
Monae Byrne	Metropolitan State University
Pam Hoalt	Malone University
Patricia Frye	Jackson State University
Patricia Rhynders	Trident University
Patsy Barrington	University of West Florida
Paula Walker King	Columbus State University
Pouran Faghri	University of Connecticut
Rachel Abbott	Georgia Southwestern State University
Rebecca Foco	University of Massachusetts
Regina Knox	West Central Alabama Area Health Education Center
Robert Clegg	California Health Sciences University
Robert E. Braun	Otterbein University
Ronald Black Jr	Marymount
Sandra Minor Bulmer	Southern Connecticut State University
Sara Fehr	Texas A&M University
Sara S Plaspohl	Armstrong University
Spencer L. Willis, Jr.	Texas A&M University
Starr Eaddy	St. Francis College
Sue Forster-Cox	New Mexico State University
Thomas M. Davis	University of Northern Iowa
Toby R Levin	Monroe College
Wendy Ramirez	California State University
Wynn Gillan	Southeastern Louisiana University
Yuba Gautam	Northern Michigan University

For more information on becoming an NCHEC Ambassador, contact Cynthia Narh, MPH, MCHES®, cnarh@nchec.org.

NCHEC WELCOMES NEW CHES® – SPRING 2017

The following is an additional list of those who earned the district title of Certified Health Education Specialist (CHES®) in the April 2017 examination. NCHEC congratulates those who took the exam within the 90 days of graduation and have now submitted proof of completion. Those who opted not to be published are excluded from the list.

Aaron Agley	Alyssa Jensen	Rachel Ram
Sarah Avery	Rachael Keep	Sydney Reed
Stephanie Barr	Samuel Kemp	Molly Rostrom
Amber Bateman	Miranda Ketcherside	McKenzie Russell
Lauren Becker	Brittany Lancaster	Abigail Santiago
Ashley Beus	Whitney Landon	Christopher Saylor
Megan Block	Ashley Lee	Alaina Schaeffer
Chelsey Boldon	Chris Leidel	Carina Scianguila
Shanae Ashley Brown	Taylor Lombardo	Sabahat Siddiq
Katie Castleton	Alissa Maggard	Darel Smart
Charline Charlestin	Jennifer Martinez	Anna Snyder
Rachael Cope	Ciara Mattner	Ashley Spencer
Windy Cunningham	Dansen Mayhay	Sheridan Stanley
Austin Daw	Taisha'ne McGuire	Sloan Storey
Jasmine Douglas	Ruth Montesines	Madison Taylor
Gavin French	Megan Moore	Elise Tessin
Ellen Gaietto	Jessica Nila	Anasthasia Vakunta
Jinmee Graham	Katharine Olscamp	Tangela Williams
Jenise Harris	Ife Oyeboode	Alicia Wolken
Kellie Hoch	Taggart Phillips	
Jessica Howsden	Krysta Postlethwaite	
Kandace Huddleston	Elijah Puett	



Tell a colleague or student that the
2018 CHES® AND MCHES® EXAM DATES
are April 28, 2018 and October 11-20, 2018

For more information, visit www.nchec.org or contact the
Exam Coordinator: 888 - 624 - 3248, ext 12

APRIL 2018						
Sun	Mon	Tues	Wed	Thu	Fri	Sat
1	2	3	4	5	6	7
8	9	10	11	12	13	14
15	16	17	18	19	20	21
22	23	24	25	26	27	28
29	30					

FIRST COMPUTER-BASED EXAM!

OCTOBER 2018						
Sun	Mon	Tues	Wed	Thu	Fri	Sat
	1	2	3	4	5	6
7	8	9	10	11	12	13
14	15	16	17	18	19	20
21	22	23	24	25	26	27
28	29	30	31			

Congratulations to the Board of Commissioner (BOC) and Division Board Directors who were elected to terms of service beginning in 2018! BOC: Bill Potts-Daetma; DBPPP: Jennifer Taylor; DBPD: Sandra “Liliana” Hernandez; DBCHEs: Theresa Blanco, Kristen Hildreth, Ninfa Pena-Purcell, Cherylee Sherry, and Melody Knight.

NCHEC BOARDS

In addition, we would like to share our appreciation for those who have completed terms of service in 2017: Nancy Clifton-Hawkins, Amy Hedman-Robertson, Gwyn Ashcom, Shana Pack, Melody Knight and Jennifer Taylor.

A sincere thank you to all for your hard work and dedication to NCHEC and to the governing boards. Our organization’s success is a direct result of the many volunteer hours given by such outstanding individuals!



The 2017 NCHEC Board of Commissioners at their face to face meeting in March at the NCHEC headquarters. Front row sitting from left to right: Kerry Redican, Ronenia Jenkins, Nancy Clifton-Hawkins. Back row standing from left to right: Melissa Opp (staff), Kathleen Allison, Jill Clutter, Chesley Cheatham, Dixie Dennis, Kathy Janes Jinkins, Larry Williams, Linda Lysoby (staff). Missing from photo: Carolyn Rodgers and Nicole Lindsey.



The 2017 NCHEC Division Board for Professional Preparation and Practice (DBPPP) at their face to face meeting in May at the NCHEC headquarters. Front row sitting from left to right – Kadi Bliss, Kerry Redican, Gwyn Ashcom. Back row standing from left to right: Kelly Miller, Alicia Carranza, and Dawn Bleyenbarg. Missing from the photo: Carolyn Rodgers.



The 2017 Division Board for Professional Development (DBPD) at their face to face meeting in February at the NCHEC headquarters. From left to right: Davondra Brown, Nigel Thomas, Shontelle Dixon, Chesley Cheatham, and Karen Stewart. Missing from photo: Jennifer Taylor and Nicole Lindsey.



The 2017 NCHEC Division Board for Certification of Health Education Specialists (DBCHES) at their face to face meeting in May 2017 at NCHEC headquarters. Front row sitting from left to right: Jill Clutter, Kathleen Allison. Back row standing: Chris Abarca, Melody Knight, Shana Pack, Darlene Saunders, Amy Hedman-Robertson, Marietta Orlowski, Dianne Kerr. Missing from the photo: Brian Gordon.



NCHEC NEWS

CREDENTIALING EXCELLENCE IN HEALTH EDUCATION



National Commission for
Health Education Credentialing, Inc.

Credentialing Excellence in Health Education

National Commission for
Health Education Credentialing, Inc.

1541 Alta Drive, Suite 303
Whitehall, PA 18052

Phone: (888) 624 - 3248

Fax: (800) 813 - 0727

Web site: www.ncheec.org

NONPROFIT ORG

U.S. Postage PAID

Permit No. 274

Lehigh Valley, PA

NEED CREDITS??

Visit NCHEC.org and click on find CE hours
to locate hundreds of opportunities.

NCHEC STAFF

Executive Director

Linda Lysoby, MS, MCHES*, CAE
llysoby@ncheec.org • ext. 13

Deputy Executive Director

Melissa Opp, MPH, MCHES*
mopp@ncheec.org • ext. 11

Credentialing Project Specialist

Cynthia Kusorgbor - Narh, MPH, MCHES*
narh@ncheec.org • ext. 16

Continuing Education Coordinator

Melissa Schmell
mschmell@ncheec.org • ext. 14

Exam Coordinator/ Office Manager

Tanya Cole
tcole@ncheec.org • ext. 12

Financial Coordinator

Lisa Petrone
lpetrone@ncheec.org • ext. 15

Communications Specialist

Jessica Wessner
jwessner@ncheec.org • ext. 10

Administrative Coordinator

Mimi Byelick
mbyelick@ncheec.org • ext. 18

BOARD OF COMMISSIONERS

Executive Officers 2018

Kerry Redican, MPH, PhD, CHES* (2014-2018)
(Chair, DBPPP)

Chesley Cheatham, M.Ed., BS, MCHES* (2014-2018)
(Vice-Chair, DBPD)

Jill Clutter PhD, MCHES* (2016-2018)
(Secretary, DBCHES)

Ronena Jenkins, MPH, CHES*, CWPC (2015-2019)
(Treasurer, At-large)

Dixie Dennis, MS, PhD, MCHES* (2014-2018)
(Immediate Past Chair, At-large)

Commissioners

Kathleen Allison, PhD, MPH, MCHES* (2017-2018)
(DBCHES)

Bill Potts-Datema, DrPH(c), MS, MCHES* (2018-2022)
At-Large Commissioner

Eric J. Hagan, Ed.D (Public Member) (2017-2019)

Kathy Jones Jinkins, BSN, M.Ed, MCHES* (2016-2020)
At-Large Commissioner

Nicole Lindsey, MPH, BS, MCHES* (2017-2018)
(DBPD)

Carolyn Rodgers, PhD, MPH, MHS, MCHES* (2017-2018)
(DBPPP)

Division Board for Certification of Health Education Specialists

Kathleen Allison, PhD, MPH, MCHES*, Coordinator

Jill Clutter, PhD, MCHES*, Vice-Coordinator

Theresa Blanco, MEd, MCHES*

Brian Gordon, MA, PhD, MCHES*

Kristen Hildreth, PhD, MCHES*

Dianne Kerr, PhD, MCHES*

Melody Knight, PhD, RN, MCHES*

Marietta Orłowski, PhD, MCHES*, CPH

Ninfa Pena-Purcell, PhD, MCHES*

Darlene Saunders, PhD, MPH, MCHES*

Cherylee Sherry, MPH, MCHES*

Division Board for Professional Preparation and Practice

Kerry Redican, MPH, PhD, CHES*, Coordinator

Carolyn Rodgers, PhD, MPH, MHS, MCHES*,
Vice-Coordinator

Dawn Bleyenburgh, MS, MCHES*

Kadi Bliss, PhD, CHES*

Alicia Carranza, MPH, MCHES*

Kelly Miller, PhD, MPH, CHES*

Jennifer Taylor, DHEd, MPH, MCHES*

Division Board for Professional Development

Chesley Cheatham, M.Ed, BS, MCHES*, Coordinator

Nicole Lindsey, MPH, BS, MCHES*, Vice-Coordinator

Davondra Brown, M.Ed, CHES*

Shontelle Dixon, MPH, CHES*

Sandra "Liliana" Hernandez, MPH, MPA, CHES*, CHC

Karen Stewart, MPH, MCHES*

Nigel Thomas, Ed.D, MPH, MCHES*

Editorial Board

Editor – Melissa Opp, MPH, MCHES*, NCHEC

Copy Editors – Jessica Wessner, NCHEC

Emily Tyler, MPH, RHed, RCHES, Former NCHEC Commissioner